

# Is your company's Global Mobility Program ON THE MARK?

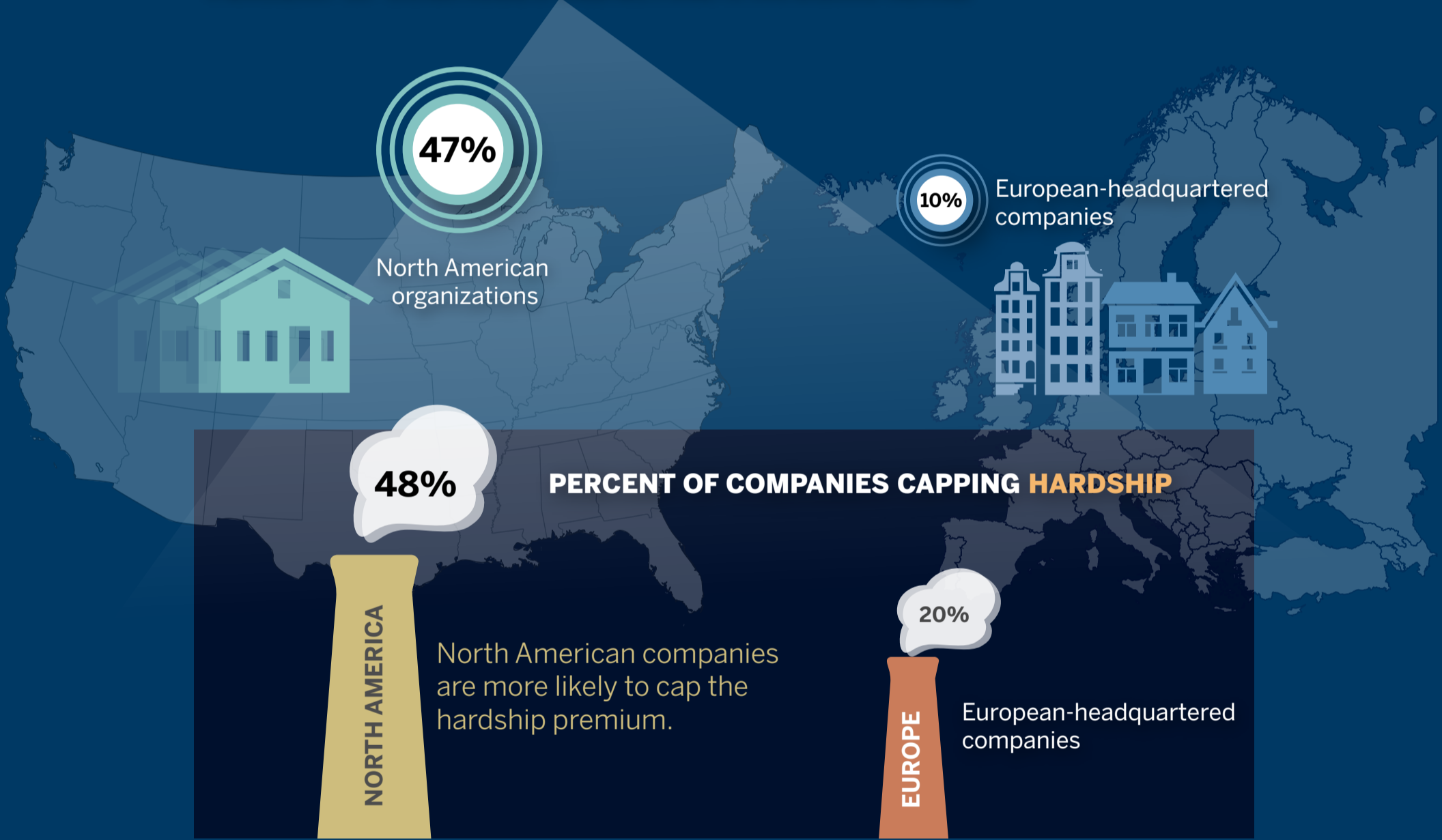
The results of AIRINC's 2015/2016 Long Term Policy Benchmark Survey are in!

## POLICY SPOTLIGHT



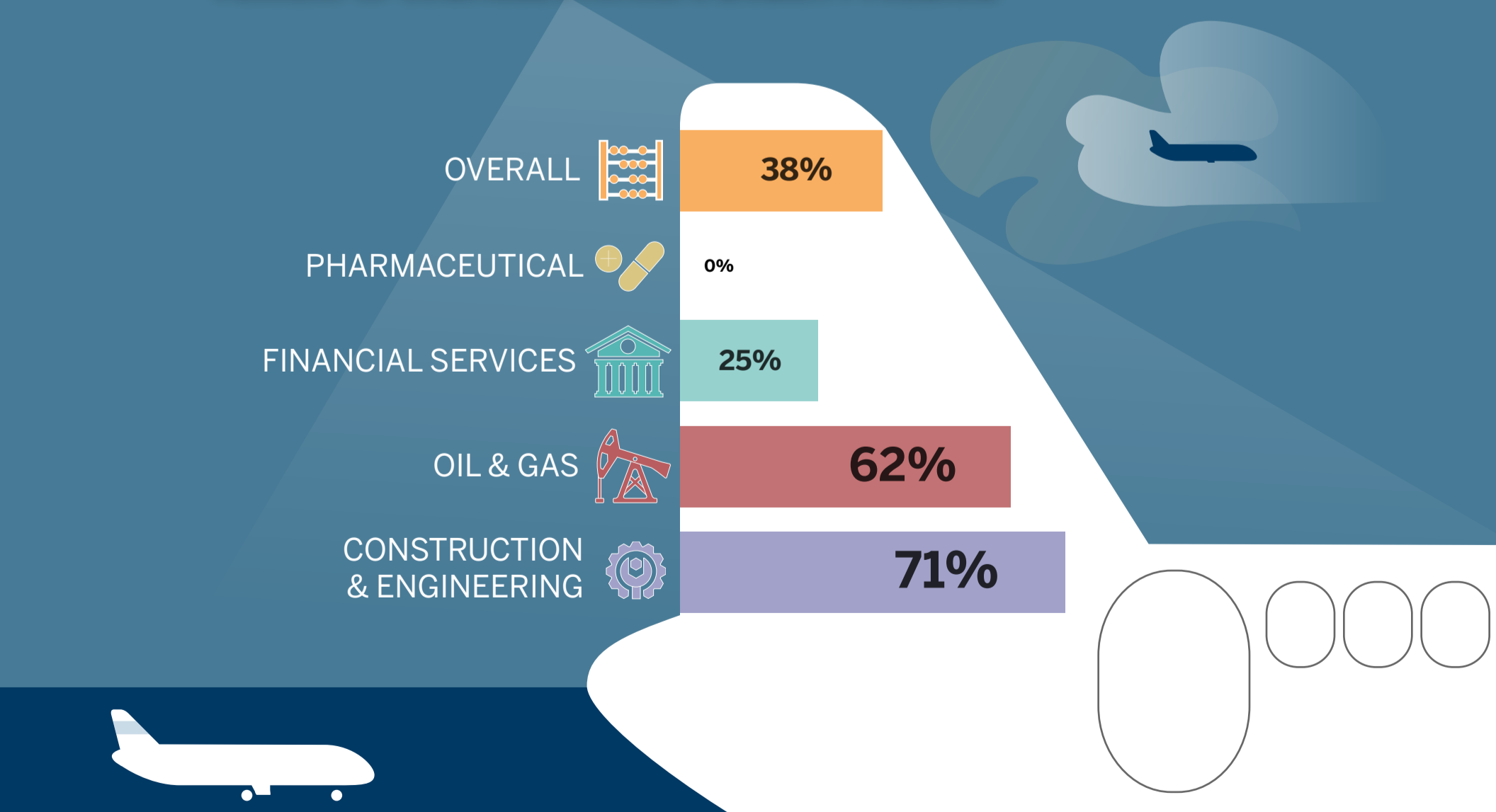
## REGIONAL SPOTLIGHT

PERCENT OF COMPANIES DEDUCTING A HOUSING NORM



## INDUSTRY SPOTLIGHT

PERCENT OF COMPANIES PAYING A MOBILITY PREMIUM



AIRINC offers an array of Benchmarking Solutions to effectively assess a company's mobility program and guide decisions that will help achieve organizational objectives. For more information contact [benchmarking\\_team@air-inc.com](mailto:benchmarking_team@air-inc.com).